

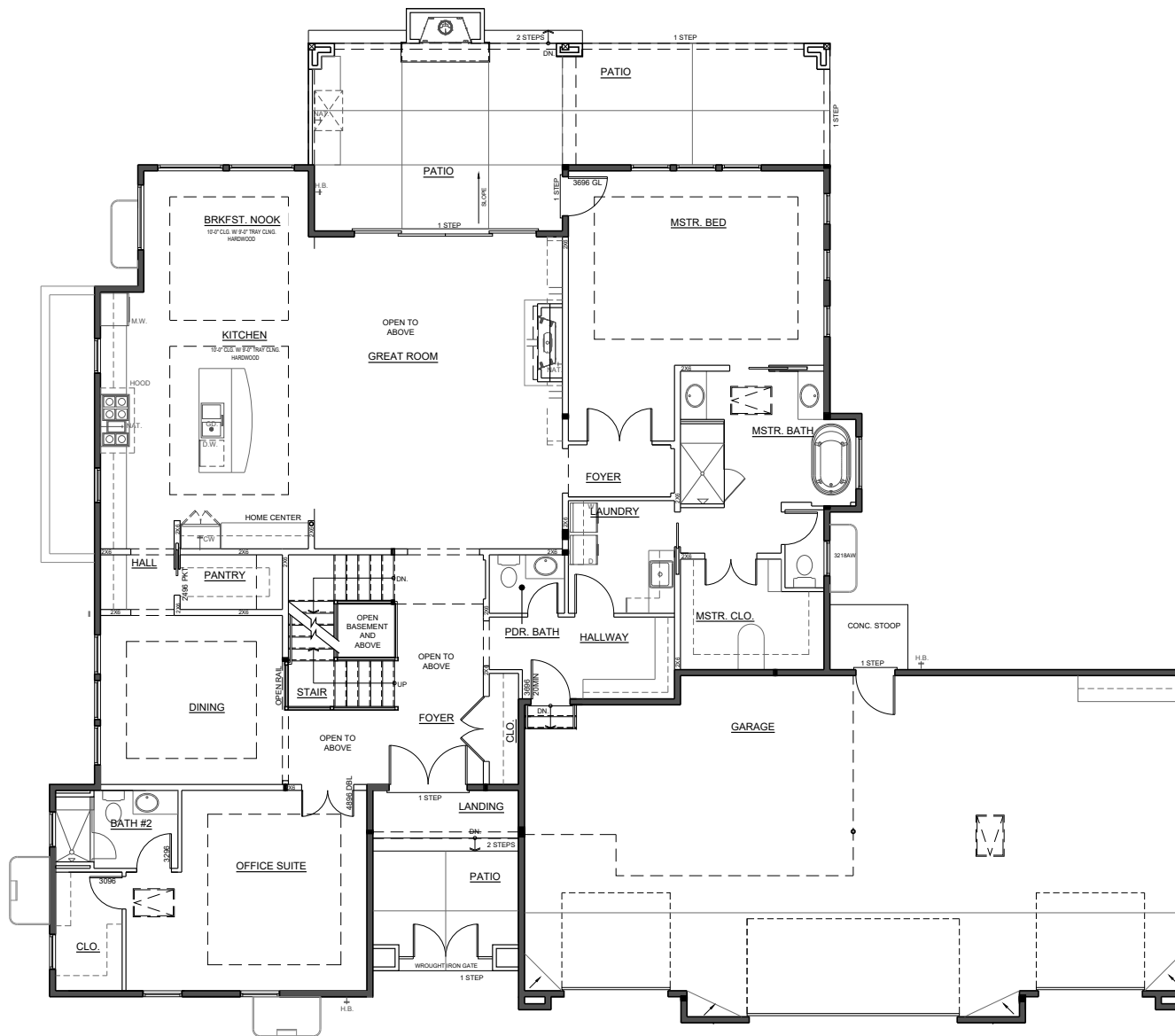
1 BASEMENT FLOOR PLAN

SCALE: 1/4" = 1'-0"

2,482 SF FINISHED + 347 SF UNFINISHED = 2,829 SF



WAYNE ANTHONY CUSTOM HOMES
BLACK FOREST FLOOR PLAN



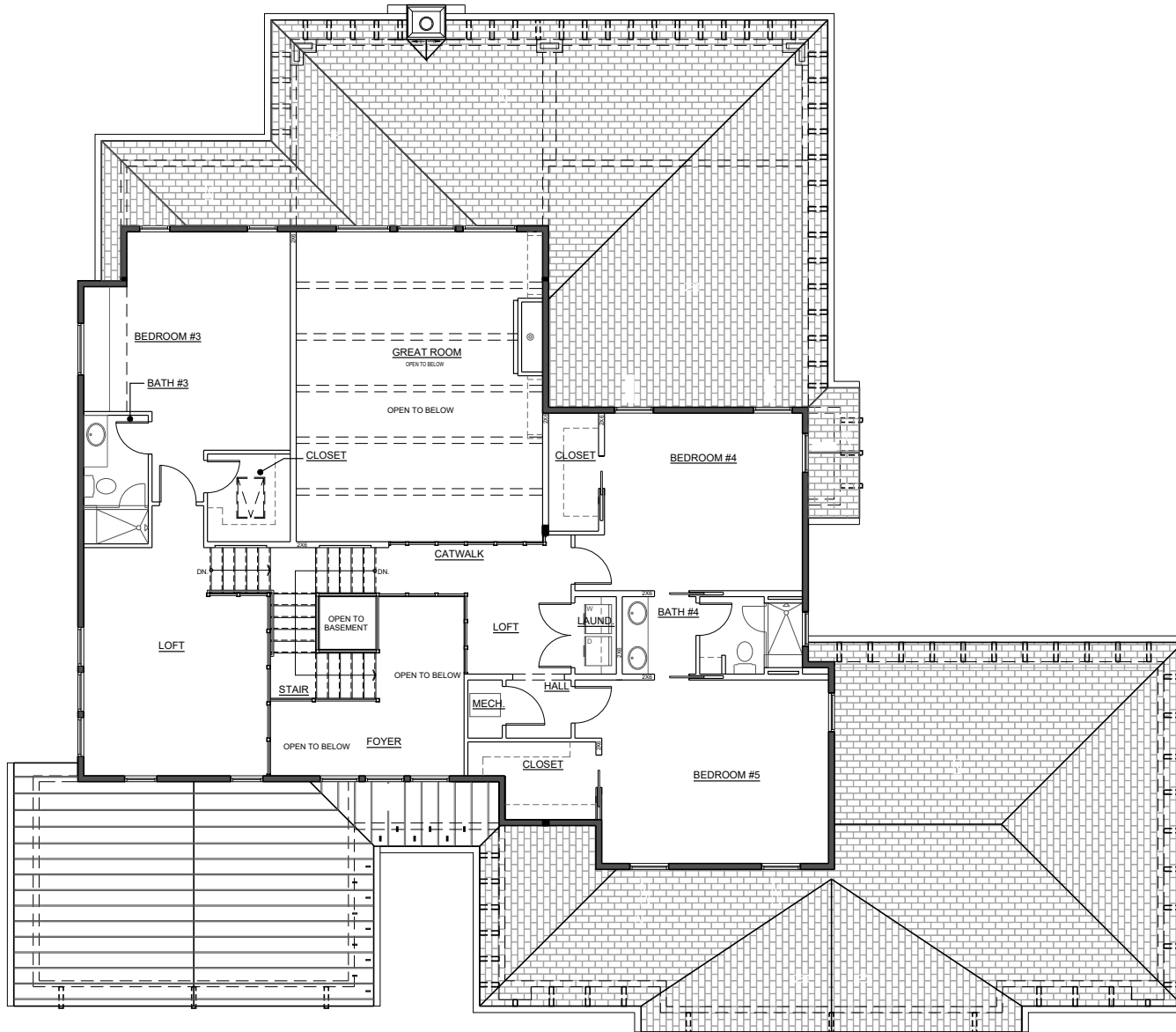
1 FIRST FLOOR PLAN

SCALE: 1/4" = 1'-0"

2,829 SF FINISHED • 1,312 SF GARAGE • 4,141 SF FIRST FLOOR



WAYNE ANTHONY CUSTOM HOMES
 BLACK FOREST FLOOR PLAN
 © 2024 Brian J. Young



1 SECOND FLOOR PLAN

SCALE: 1/4" = 1'-0"

1,619 SF SECOND FLOOR



WAYNE ANTHONY CUSTOM HOMES
 BLACK FOREST FLOOR PLAN
 © 2024 Brian J. Young